

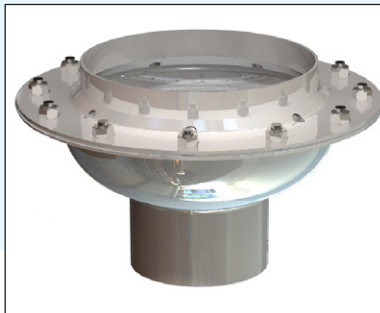
Leak Eliminator™

Trough Drain Connector

Eliminate Leaks Into Occupied Spaces Below A Floor Trough Installation



Model SF-1000



FEATURES

- Sump drain body, flange, and welded threaded studs and bolts made entirely of 14-gauge Type 304 stainless steel
- All seams are welded, ground and polished watertight
- Adjustable in height by 3." (19) to suit field conditions
- Seepage flange mates to trough sump drain body providing additional stability and helping to anchor the pan
- Designed for use exclusively with all Made To Drain trough drains
- Made in U.S.A., easy to install
- Taller adjustable seepage flange collar available at additional cost (consult factory)

BENEFITS

- Protects occupied spaces below floor trough
- Sump drain and seepage flange assembly mates securely with the floor trough
- Eliminates disruptive and costly repairs to building interiors, finished ceilings



Featured In



AutoQuotes KCLCadalog

Made To Drain

4900 West Electric Avenue • West Milwaukee, WI 53219 U.S.A.
866-895-7264 • Fax 414-902-6564 • info@madetodrain.com • www.madetodrain.com

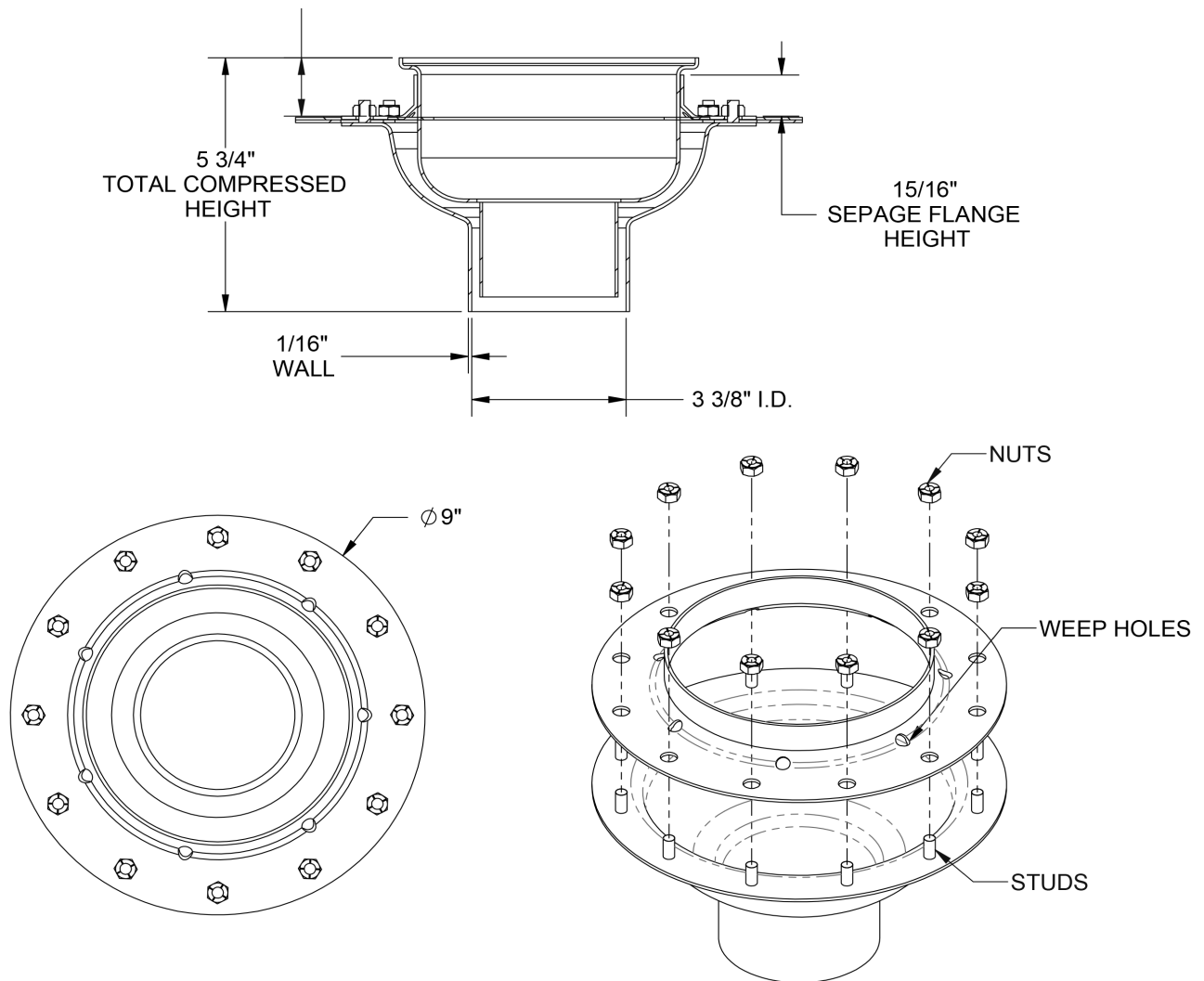
Powered by **L LAKESIDE®**

Leak Eliminator™

Trough Drain Connector

SPECIFICATIONS

Provide two piece 2B stainless sump drain and seepage flange assembly. Sump drain is a seamless bowl with 12 stainless steel threaded studs welded water-tight to top edge of seepage flange collar. Drain outlet to have 3 1/2" (89) diameter tail piece. Seepage flange has 12 holes to match sump drain flange and stud locations. 7 weep holes are located at base of seepage flange to permit flow of liquids to building drain. Stainless steel nylon locking nuts are provided for all threaded stud locations. This product is designed to mate and match with all **Made To Drain** floor trough products.



4900 W. Electric Avenue • West Milwaukee, WI 53219

Sales & Service: (P) 866.895.7264 • (F) 414.902.6564

madetodrain.com

